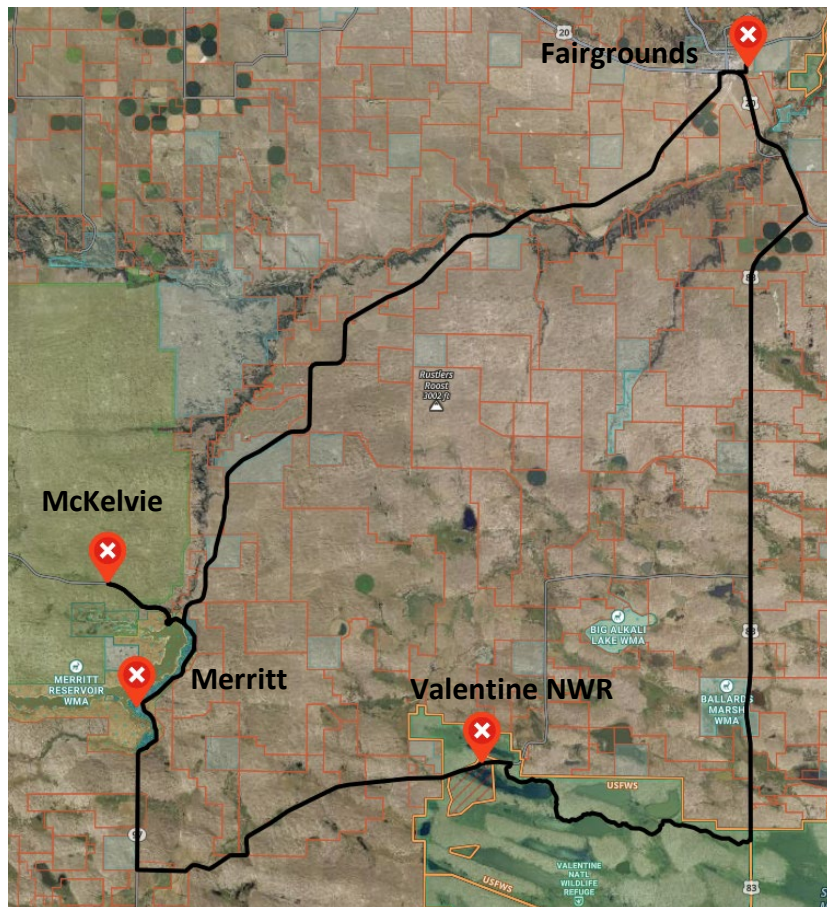


Field Trip

We will travel across the beautiful Sandhills to visit a mix of federal, state, and private lands that support robust populations of sharp-tail grouse and greater prairie chickens. At each stop local biologist will give us insight into the ongoing habitat restoration efforts and goals for future management of each site. During the field trip we will highlight the efforts for large scale landscape management of grasslands in the area to improve habitat for prairie grouse and other grassland species. Stops will include visits to McKelvie National Forest, Merritt Reservoir, private lands project, and Valentine National Wildlife Refuge.



- 9:00 – Depart City of Valentine – We will leave from the fairgrounds
- 9:45 – Arrive at McKelvie – Speaker & explore – 1 hour
- 10:45 – Depart McKelvie
- 11:00 – Arrive at Merritt – Speaker, Lunch, Restrooms – 2 hours
- 1:00 – Depart Merritt
- 1:30 – Arrive Valentine NWR – Speaker & Explore – 1 hour
- 2:30 – Depart Valentine NWR
- 3:30 – Arrive at City of Valentine